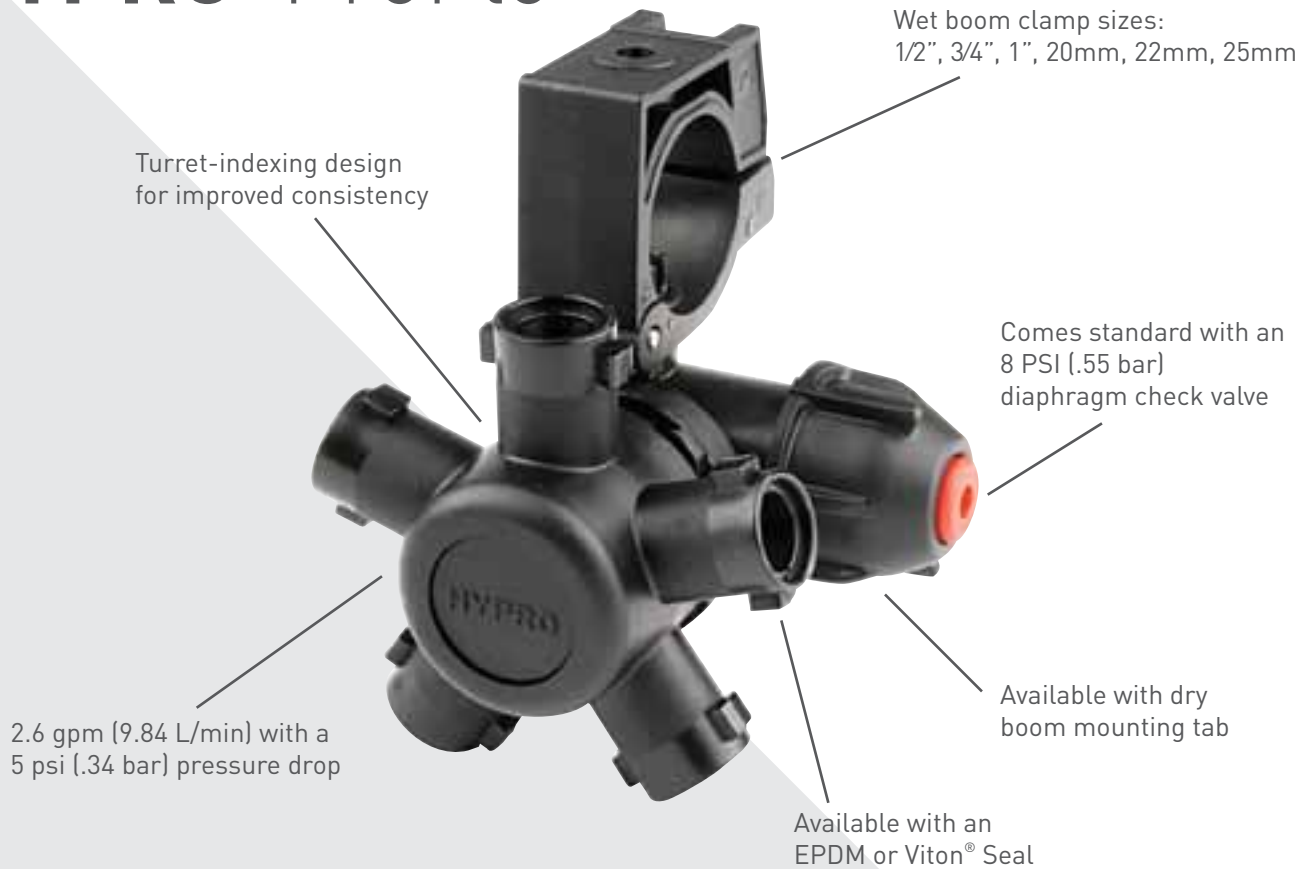


HYPRO[®] ProFlo[™]

Nozzle Bodies with Superior Durability and High Flow Rates



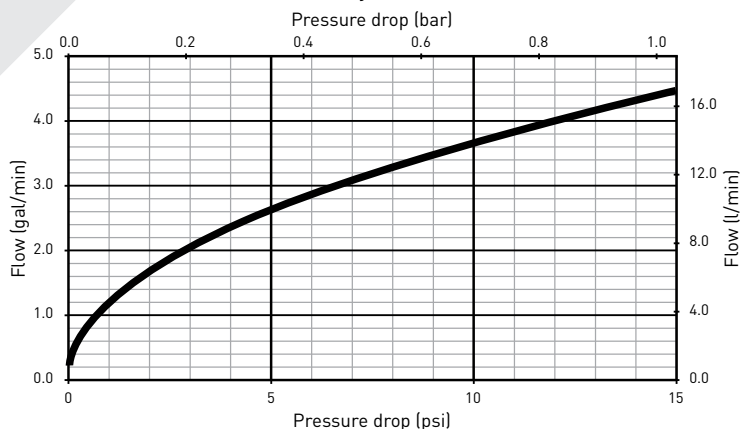
HYPRO[®] ProFlo[™]



Features & Benefits

- Turret-indexing design provides improved consistency and reliability throughout the life of the nozzle body – eliminating free spinning and seizing problems seen on competitive nozzle bodies
- Unique DCV (diaphragm check valve) design reduces restrictions in the flow path, enabling 2.6 gpm (9.84 L/min) with a 5 psi (.34 bar) pressure drop through the nozzle
- Three turret styles for an easy change of spray tips: single, 3-way, and 5-way
- Provides lowest pressure drop at any given flow in the industry
- Available in wet or dry boom versions
- Positive shutoff between each spray position
- Custom logos available upon request (minimum quantities apply)
- Designed to deliver the highest flow rates across the spraying pressure range
- Supports faster field speeds with the same coverage and supports direct fertilizer application through the nozzle body DCV flow path
- Automatic spray alignment using flat fan spray tips
- Compact design makes mounting easier with less potential interference with the spray boom structure
- ProFlo nozzle bodies come standard with an 8 psi (.55 bar) diaphragm check valve. 4 psi, 12 psi, 20 psi, and 25 psi (.28, .83, 1.4, and 1.7 bar) checks are available as options

ProFlo Nozzle Body Performance Curve



Wet Boom Nozzle Bodies

3 & 5-Way Nozzle Bodies for Wet Boom (no tab for boom clamp)



| Seal Option/ Housing Reference | Turret Options | [to clamp on] Pipe Size | | | | |
|-----------------------------------|-------------------|-------------------------|-------------|-------------|-------------|-------------|
| | | 1/2" | 3/4" | 1" | 20mm | 25mm |
| EPDM/Red | 3 | 4223N-B322 | 4223N-B323 | 4223N-B324 | 4223N-B327 | 4223N-B328 |
| | 5 | 4223N-B522 | 4223N-B523 | 4223N-B524 | 4223N-B527 | 4223N-B528 |
| Viton/Green | 3 | 4223N-B322V | 4223N-B323V | 4223N-B324V | 4223N-B327V | 4223N-B328V |
| | 5 | 4223N-B522V | 4223N-B523V | 4223N-B524V | 4223N-B527V | 4223N-B528V |

Sold in Quantities of 100
 For Individual Bags, Add Suffix -00 [i.e.: 4223N-B322-00]
 Internal Seal Kit 3430-0754 and 3430-0754V
 Mounting Kit 3430-0755 and 3430-0755V

3 & 5-Way Nozzle Bodies with Tab for Boom Clamp



| Seal Option/ Housing Reference | Turret Options | [to clamp on] Pipe Size | | | | |
|-----------------------------------|-------------------|-------------------------|-------------|-------------|-------------|-------------|
| | | 1/2" | 3/4" | 1" | 20mm | 25mm |
| EPDM/Red | 3 | 4243N-B322 | 4243N-B323 | 4243N-B324 | 4243N-B327 | 4243N-B328 |
| | 5 | 4243N-B522 | 4243N-B523 | 4243N-B524 | 4243N-B527 | 4243N-B528 |
| Viton/Green | 3 | 4243N-B322V | 4243N-B323V | 4243N-B324V | 4243N-B327V | 4243N-B328V |
| | 5 | 4243N-B522V | 4243N-B523V | 4243N-B524V | 4243N-B527V | 4243N-B528V |

Sold in Quantities of 100
 For Individual Bags, Add Suffix -00 [i.e.: 4243N-B322-00]
 Internal Seal Kit 3430-0754 and 3430-0754V
 Mounting Kit 3430-0755 and 3430-0755V

Triple Nozzle Bodies for Wet Boom



| Part Number | Description |
|-------------|----------------------------|
| 4222N-B322 | 1/2" Split Clamp |
| 4222N-B323 | 3/4" Split Clamp |
| 4222N-B324 | 1" Split Clamp |
| 4222N-B323C | 3/4" Hinged Clamp |
| 4222N-B324C | 1" Hinged Clamp |
| 4222N-B334C | 1" Hinged Clamp 12 psi DCV |

Single Drop Nozzle Body for Wet Boom



| Seal Option/ Housing Reference | [to clamp on] Pipe Size | | | | |
|-----------------------------------|-------------------------|-------------|-------------|-------------|-------------|
| | 1/2" | 3/4" | 1" | 20mm | 25mm |
| EPDM/Red | 4221N-B122 | 4221N-B123 | 4221N-B124 | 4221N-B127 | 4221N-B128 |
| Viton/Green | 4221N-B122V | 4221N-B123V | 4221N-B124V | 4221N-B127V | 4221N-B128V |

1/4" FNPT Outlet- Substitute B with F [i.e.: 4221N-F122]
 Sold in Quantities of 100
 For Individual Bags, Add Suffix -00 [i.e.: 4221N-B122-00]

Wet Boom Single Nozzle Bodies-No Diaphragm Check Valve



| Single hose barb P/N | Hose ID |
|----------------------|------------|
| 4201N-B102 | 1/2" Clamp |
| 4201N-B103 | 3/4" Clamp |
| 4201N-B104 | 1" Clamp |

Dry Boom Nozzle Bodies

3 & 5-Way Nozzle Bodies with Tab for Boom Clamp and Hose Barb for Dry Boom



| Seal Option/ Housing Reference | Turret Options | 3/4" | 3/4" | 1" | 1" |
|-----------------------------------|-------------------|-----------------|-----------------|-----------------|-----------------|
| | | Single-Ended HB | Double-Ended HB | Single-Ended HB | Double-Ended HB |
| EPDM/Red | 3 | 4263N-B323S | 4263N-B323D | 4263N-B324S | 4263N-B324D |
| | 5 | 4263N-B523S | 4263N-B523D | 4263N-B524S | 4263N-B524D |
| Viton/Green | 3 | 4263N-B323SV | 4263N-B323DV | 4263N-B324SV | 4263N-B324DV |
| | 5 | 4263N-B523SV | 4263N-B523DV | 4263N-B524SV | 4263N-B524DV |

Sold in Quantities of 100
For Individual Bags, Add Suffix -00 [i.e.: 4263N-B323S-00]
Internal Seal Kit 3430-0754 and 3430-0754V
Mounting Kit 3430-0755 and 3430-0755V

Hose Barb Triple Nozzle Bodies



| Single hose barb P/N | Double hose barb P/N | Triple hose barb P/N | Hose ID |
|----------------------|----------------------|----------------------|---------|
| 4242N-B322S | 4242N-B322D | 4242N-B322T | 1/2" |
| 4242N-B323S | 4242N-B323D | 4242N-B323T | 3/4" |

Hose Barb Dry Boom Nozzle Bodies



| Single hose barb P/N | Double hose barb P/N | Triple hose barb P/N | Hose ID |
|----------------------|----------------------|----------------------|---------|
| 4241N-B121S | 4241N-B121D | 4241N-B121T | 3/8" |
| 4241N-B122S | 4241N-B122D | 4241N-B122T | 1/2" |
| 4241N-B123S | 4241N-B123D | 4241N-B123T | 3/4" |

Hose Barb Dry Boom Nozzle Bodies-with Top-Mounted Diaphragm Check Valve



| Single hose barb P/N | Double hose barb P/N | Hose ID |
|----------------------|----------------------|---------|
| 4240N-B121S | 4240N-B121D | 3/8" |
| 4240N-B122S | 4240N-B122D | 1/2" |
| 4240N-B123S | 4240N-B123D | 3/4" |

Threaded Single Nozzle Bodies



| Seal Option/ Housing Reference | 1/4" MNPT x 1/4" FNPT | | | 1/4" MNPT x Bayonet | 11/16" UNF x Bayonet |
|-----------------------------------|-----------------------|-------------|-------------|---------------------|----------------------|
| | 4 PSI | 8 PSI | 25 PSI | 8 PSI | 8 PSI |
| EPDM/Red | 4240N-F110 | 4240N-F120 | 4240N-F150 | 4240N-B020 | 4241N-B120U |
| Viton/Green | 4240N-F110V | 4240N-F120V | 4240N-F150V | 4240N-B020V | - |

Hose Barb Dry Boom Nozzle Bodies-No Diaphragm Check Valve



| Single hose barb P/N | Double hose barb P/N | Triple hose barb P/N | Hose ID |
|----------------------|----------------------|----------------------|---------|
| 4231N-B101S | 4231N-B101D | 4231N-B101T | 3/8" |
| 4231N-B102S | 4231N-B102D | 4231N-B102T | 1/2" |
| 4231N-B103S | 4231N-B103D | 4231N-B103T | 3/4" |

Accessories

ProStop™ Air-Actuated On/Off Nozzle Control Valve

New!



| Part Number | Description |
|-------------|-------------------------|
| PS3/4F-PN | ProStop™ valve assembly |

- Provides flow control on the nozzle body for fast spray activation and positive shutoff
- Easily adapt to your ProFlo single drop, 3 or 5-way nozzle bodies
- Chemically-resistant construction with polypropylene body, PVDF plunger, stainless steel springs and EPDM seals



Standard 1/4" and 6 mm push-connect fittings simplifies installation



Provides fast spray activation & positive shutoff

Dry Boom Adapters for Multi-Turret



| Part Number | Type | Clamp Size | Hose Barb |
|-------------|--------|------------|-----------|
| 4200-0111N | Single | 1/2" Pipe | 1/2" |
| 4200-0112N | Single | 3/4" Pipe | 3/4" |
| 4200-0113N | Single | 3/4" Pipe | 1" |
| 4200-0114N | Single | 1" Pipe | 3/4" |
| 4200-0115N | Single | 1" Pipe | 1" |
| 4200-0211N | Double | 1/2" Pipe | 1/2" |
| 4200-0212N | Double | 3/4" Pipe | 3/4" |
| 4200-0213N | Double | 3/4" Pipe | 1" |
| 4200-0214N | Double | 1" Pipe | 3/4" |
| 4200-0215N | Double | 1" Pipe | 1" |

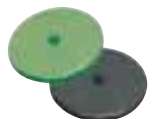
Replacement Check Valve (DCV) includes Flynut, Housing and Spring



| Housing Reference | Spring Pressure (PSI)/Plunger Reference Color | | | | |
|-------------------|---|-------------|---------------|-------------|-------------|
| | 4 PSI/Orange | 8 PSI/Black | 12 PSI/Yellow | 20 PSI/Gray | 25 PSI/Blue |
| Red | 4200-0010 | 4200-0020 | 4200-0030 | 4200-0040 | 4200-0050 |
| Green | 4200-0010V | 4200-0020V | 4200-0030V | 4200-0040V | 4200-0050V |

Red housing indicates for use with EPDM Seals. Green housing indicates for use with Viton Seals.
Note: Diaphragms are sold separately. See replacement part order information below.

Replacement Diaphragm Seal Options for Check Valves



| Seal Option | Part Number | Color |
|-------------|-------------|-------|
| EPDM | 4200-0004E | Black |
| Viton | 4200-0004V | Green |

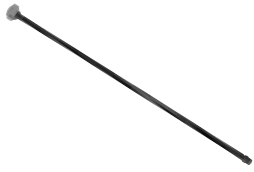
Replacement Nozzle Body Stem Seals



| Part Number | Description/Material | Color |
|-------------|--------------------------------|-------|
| 1723-0142 | 10 mm Wet Boom Stem Seal-EPDM | Black |
| 1721-0220 | 10 mm Wet Boom Stem Seal-Viton | Green |

Accessories

Hose Drops



| Part Number | Length | Description Outlet, Inlet |
|-------------|--------|---|
| 430001 | 15" | 1/4" NPT, 11/16" - 16UN(M) |
| 430002 | 24" | 1/4" NPT, 11/16" - 16UN(M) |
| 430201 | 15" | 1/4" NPT, Quick Attach Fitting |
| 430202 | 24" | 1/4" NPT, Quick Attach Fitting |
| 430201V | 15" | 1/4" NPT, Quick Attach Fitting with Viton |
| 430202V | 24" | 1/4" NPT, Quick Attach Fitting with Viton |

Series 404 Swivel and Threaded-Swivel Nozzle Bodies



| Part Number | Description |
|-------------|--|
| 4200N-0020 | Single Swivel 1/4" FNPT X Quick Attach |
| 4200N-0021 | Double Swivel 1/4" FNPT X 2 Quick Attach |
| 4200N-0023 | Single 1/4" FNPT X 11/16" - 16UN(M) |
| 4200N-0024 | Double 1/4" FNPT X 11/16" - 16UN(M) |
| 4200N-0025 | Red Retaining Cap 11/16" - 16UN(F) |
| 4200N-0026 | Black Retaining Cap 11/16" - 16UN(F) |

Quick Fitting Adapters



| Reference Number | Part Number | Description |
|------------------|-------------|--------------------------|
| 1 | 4200-0016N | 1/4" MNPT x Quick Attach |
| 2 | 4200-0019 | 1/4" FNPT x Quick Attach |

Vari-Spacing Clamps



| Part Number | Ball Thread | Piping/Tubing Size |
|-------------|-------------|----------------------|
| 413003 | Steel | 3/4" (1.050" O.D.) |
| 413004 | Steel | 1" (1.315" O.D.) |
| 413005 | Steel | 1-1/4" (1.660" O.D.) |

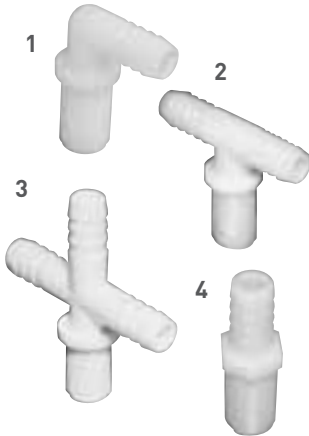
Hypro Dry Boom Clamps with Slot for Easy Assembly



| Part Number | Material | Tubing Size |
|-------------|---------------------|--------------------|
| 1520-1075 | Zinc Plated Steel | 3/4" Square Tube |
| 1520-1100 | Zinc Plated Steel | 1" Square Tube |
| 1520-1125 | Zinc Plated Steel | 1-1/4" Square Tube |
| 1520-1150 | Zinc Plated Steel | 1-1/2" Square Tube |
| 1520-1075SS | 304 Stainless Steel | 3/4" Square Tube |
| 1520-1100SS | 304 Stainless Steel | 1" Square Tube |
| 1520-1125SS | 304 Stainless Steel | 1-1/4" Square Tube |
| 1520-1150SS | 304 Stainless Steel | 1-1/2" Square Tube |

11/16" Accessories

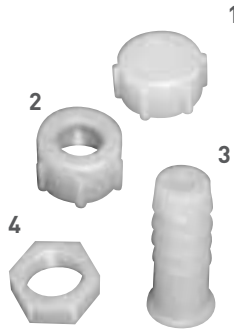
11/16" UN Nozzle Bodies



| Reference Number | Nylon Part Number | Poly Part Number | Description | Standard Pack |
|------------------|-------------------|------------------|---|---------------|
| 1 | NTL14 | 3NNTL14 | 11/16" - 16UN(M) X 1/4" HB Elbows | 25 |
| 1 | NTL38 | 3NNTL38 | 11/16" - 16UN(M) X 3/8" HB Elbows | 25 |
| 1 | NTL12 | 3NNTL12 | 11/16" - 16UN(M) X 1/2" HB Elbows | 25 |
| 1 | NTL58 | 3NNTL58 | 11/16" - 16UN(M) X 5/8" HB Elbows | 25 |
| 1 | NNTL34 | 3NNTL34 | 11/16" - 16UN(M) X 3/4" HB Elbows | 25 |
| 2 | NNTT38 | 3NNTT38 | 11/16" - 16UN(M) X 3/8" HB Tees | 25 |
| 2 | NNTT12 | 3NNTT12 | 11/16" - 16UN(M) X 1/2" HB Tees | 25 |
| 2 | NNTT58 | 3NNTT58 | 11/16" - 16UN(M) X 5/8" HB Tees | 25 |
| 2 | NNTT34 | 3NNTT34 | 11/16" - 16UN(M) X 3/4" HB Tees | 25 |
| 3 | T38C | 3T38C | 11/16" - 16UN(M) X 3/8" HB Crosses | 25 |
| 3 | T12C | 3T12C | 11/16" - 16UN(M) X 1/2" HB Crosses | 25 |
| 3 | T34C | 3T34C | 11/16" - 16UN(M) X 3/4" HB Crosses | 25 |
| 4 | 38D | 338D | 11/16" - 16UN(M) X 3/8" HB Nozzle Shanks Straight | 25 |
| 4 | 3812D | 33812D | 11/16" - 16UN(M) X 1/2" HB Nozzle Shanks Straight | 25 |

Includes B12/3B12 nut.

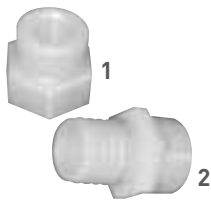
Nozzle Body Cap and Nut



| Reference Number | Nylon Part Number | Poly Part Number | Description | Standard Pack |
|------------------|-------------------|------------------|--|---------------|
| 1 | 3942* | 33942* | 11/16" - 16UN(F) Nozzle Blank Cap | 25 |
| 2 | 8027* | 38027* | 11/16" - 16UN(F) Nozzle Cap for Tip/Barb | 25 |
| 3 | K8414 | 3K8414 | 1/4" HB for 8027/38027 Cap | 25 |
| 3 | K8438 | 3K8438 | 3/8" HB for 8027/38027 Cap | 25 |
| 3 | K8412 | 3K8412 | 1/2" HB for 8027/38027 Cap | 25 |
| 4 | B12* | 3B12* | 11/16" - 16UN Jam Nut | 25 |

* Fits all nozzle fittings with 11/16" male straight thread.

Other Nozzle Body Accessories



| Reference Number | Nylon Part Number | Poly Part Number | Description | Standard Pack |
|------------------|-------------------|------------------|---|---------------|
| 1 | NF1614 | 3NF1614 | 11/16" - 16UN(F) X 1/4" FNPT Female Spray Tip Adapter | 25 |
| 2 | NB1614 | 3NB1614 | 11/16" - 16UN(M) X 1/4" MNPT Nipple | 25 |
| 2 | NB1612 | 3NB1612 | 11/16" - 16UN(M) X 1/2" MNPT Nipple | 25 |

Steel Boom Clamps for use with 11/16" Nozzle Bodies



| Part Number | Piping/Tubing Size |
|-------------|----------------------------|
| BC34R | 3/4" Round Pipe (1.05" OD) |
| BC100R | 1" Round Pipe (1.315" OD) |
| BC100 | 1" Square Tube |
| BC114 | 1-1/4" Square Tube |

Boom/Pipe Accessories

Cobra Clip™ Boom Pipe Mounts



| Reference Number | Part Number | Description |
|------------------|-------------|---|
| 1 | 0113434307 | 3/4" or 25mm Nominal Boom Pipe Mount |
| 2 | 0113434308 | 1" or 32mm Nominal Boom Pipe Mount w/Keep Strap |
| 2 | 01134343010 | 1 1/2" or 40mm Nominal Boom Pipe Mount w/Keep Strap |

Black Polypropylene Boom Pipe (Undrilled) - Schedule 80 - 20' Sections



| Part Number | Nominal Pipe Size | Pipe Length | Wall Thickness | Wall Tolerance | Outside Diameter | Max. Operating Pressure @ 73° F |
|--------------|-------------------|-------------|----------------|----------------|------------------|---------------------------------|
| 8034-F-00PP | 3/4" | 20' | 0.154 | +0.020 | 1.050 | 270 |
| 801-F-00PP | 1" | 20' | 0.179 | +0.021 | 1.315 | 250 |
| 80112-F-00PP | 1 1/2" | 20' | 0.220 | +0.021 | 1.905 | 200 |

Wet Boom Blanks



| Part Number | Material | O-ring | Description |
|-------------|---------------|--------|-------------|
| 400059 | Nylon | EPDM | 3/4" Pipe |
| 400069 | Nylon | EPDM | 1" Pipe |
| 400059P | Polypropylene | Viton | 3/4" Pipe |
| 400069P | Polypropylene | Viton | 1" Pipe |



375 5TH AVE NW, NEW BRIGHTON, MN 55112 WWW.HYPROPUMPS.COM
 PHONE: 651-766-6300 CUSTOMER SERVICE: 800-424-9776 FAX: 800-323-6496

Because we are continuously improving our products and services, Pentair reserves the right to change specifications without prior notice.