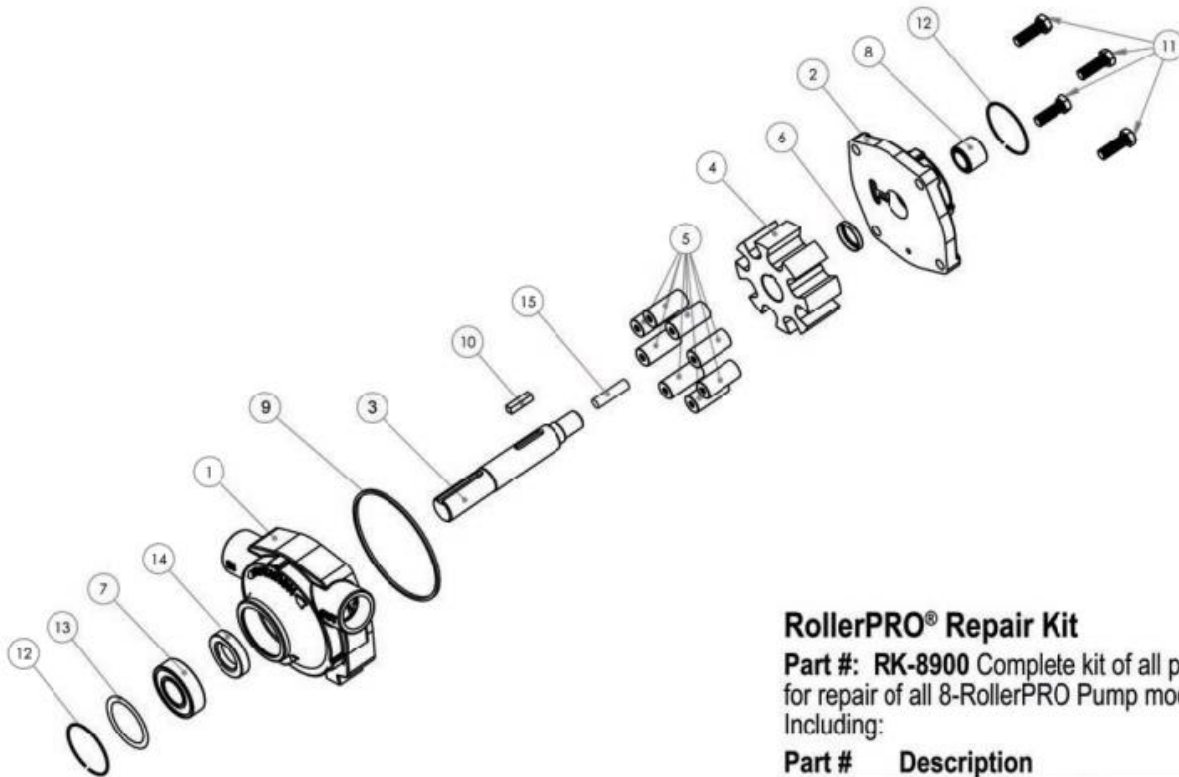


Roller Pumps



8900 Series RollerPRO® Pump Parts

Ref #	Part#	Description	Qty/ Pump
1	33801	Body - 8900C	1
	33804	Body - 8900C-R	
	33805	Body - 8900DSS	
	33806	Body - 8900DSS-R	
2	34804	End Plate - 8900C	1
	34805	End Plate - 8900C-R	
	34820	End Plate - 8900DSS	
	34825	End Plate - 8900DSS-R	
3	31810	Shaft	1
4	36851	8-Roller Rotor Overmold	1
5	35801	Ultra Roller 3/4" Diameter	8
6	37801	Shaft Seal	1
7	16228	Ball Bearing	1
8	38801	Needle Bearing	1
9	24829	Seal Ring	1
10	31811	Pill Key, Shaft	1
11	15341	Hex Head Screw- All "C" Models	4
	40802	Hex Head Screw- All "DSS" Models	
12	15334	Snap Ring	2
13	—	Name Plate: consult factory	1
14	47927	Lip Seal	1
15	38802	Needle Bearing, Inner Ring	1

RollerPRO® Repair Kit

Part #: RK-8900 Complete kit of all parts for repair of all 8-RollerPRO Pump models Including:

Part #	Description	Qty/Kit
35801	Ultra Rollers 3/4" Diameter	8
37801	Shaft Seal	1
47927	Lip Seal	1
24829	Seal Ring	1
31811	Pill Key, Shaft	1
38801	Needle Bearing	1

Accessories

Torque Bar and Chain **Part #: 33680**

Required to anchor PTO-mounted pumps in order to keep pump from rotating with the shaft

Coupler **Part #: 90700**

For 1-3/8" diameter PTO; 15/16" pump shaft; 540 RPM; forged steel body, nylon collar*

Coupler **Part #: 90300**

For 1-3/8" diameter PTO; 15/16" pump shaft; dual speed 540-1000 RPM; corrosion-resistant cast aluminum, nylon collar*

Coupler **Part #: 90500**

For 1-3/8" diameter PTO; 15/16" pump shaft; 1000 RPM; forged steel body, nylon collar*

Coupler **Part #: 90800**

For 1-3/4" diameter PTO; 15/16" pump shaft; 1000 RPM; forged steel body, nylon collar*

*Mounting hardware included