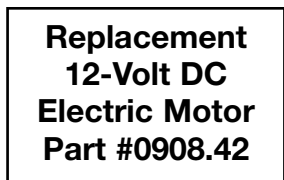
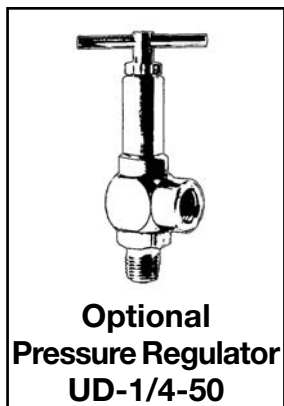
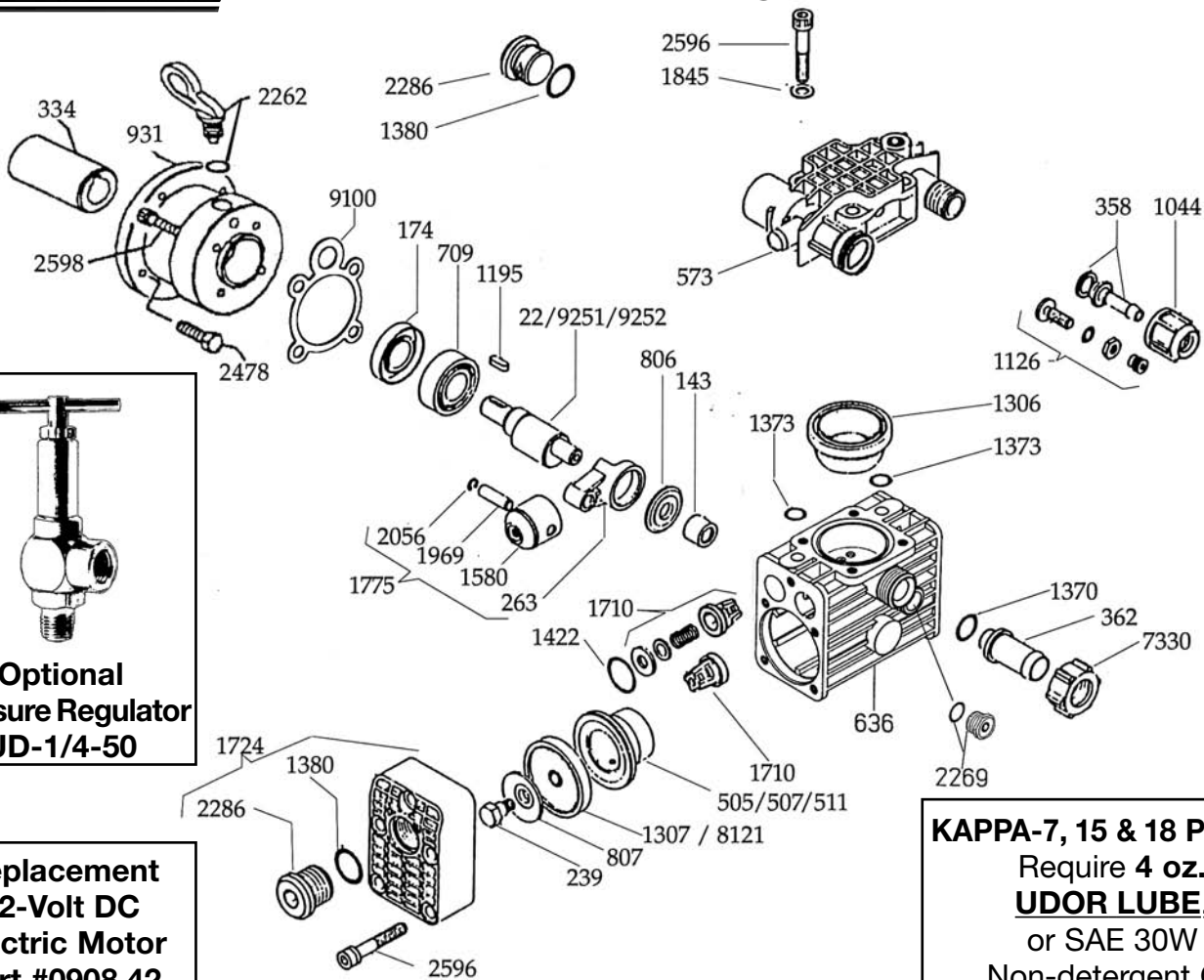




# KAPPA-7/15/18 12-Volt

## Exploded View Diagram and Parts List



**KAPPA-7, 15 & 18 PUMPS**  
 Require 4 oz. **UDOR LUBE**,  
 or SAE 30W  
 Non-detergent Oil

**KAPPA-7/15/18 12-V**

REF#	PART#	DESCRIPTION	QTY	REF#	PART#	DESCRIPTION	QTY
22	0002.75	Crankshaft - KAPPA-15	1	1370	1101.06	O-Ring	1
143	0006.13	Bearing	1	*1373	1101.11	O-Ring	2
174	0007.37	Seal	1	1380	1101.25	O-Ring	3
239	0102.02	Diaphragm Bolt	2	1422	1101.78	O-Ring	4
263	0103.07	Connecting Rod	2	1580	1205.27	Piston	2
334	0113.18	Shaft Coupler	1	1710	6006.11	Valve Assembly	4
358	0202.19	1/2" Hose Barb	1	1724	6017.14	Pump Head	2
362	0202.27	Suction Hose Barb	1	1775	6015.31	Piston Rod Assembly	2
505	0206.33	Piston Sleeve - KAPPA-15	2	1845	1403.10	Washer	8
507	0206.35	Piston Sleeve - KAPPA-7	2	1969	1502.11	Wrist Pin	2
511	0206.37	Piston Sleeve - KAPPA-18	2	2056	1506.24	Snap Ring	2
573	0208.47/12V	Discharge Manifold	1	2262	1603.24	Oil Plug	1
636	0209.48	Pump Body	1	2269	1603.69	Oil Sight Glass	1
709	0214.17	Bearing	1	2286	1603.87	Plug	3
806	0301.35	Spacer	1	2478	1804.68	Bolt	4
807	0301.37	Diaphragm Washer	2	2596	1805.23	Bolt	14
931	0501.92	Flange	1	2598	1805.31	Bolt	4
1044	0604.41	Barb Nut	1	7330	0604.29	Barb Nut	1
1126	0608.16	Air Valve Assembly	1	*8121	0903.49	Piston Diaphragm (DESMOPAN)	2
1195	0801.08	Shaft Key	1	9100	0602.49	Gasket	1
*1306	0903.44	Accumulator Diaphragm	1	9251	0002.80	Crankshaft - KAPPA-7	1
1307	0903.45	Piston Diaphragm (BUNA-N) optional	2	9252	0002.96	Crankshaft - KAPPA-18	1

\* Parts Included in Diaphragm Repair Kit - #8700.27. (Also available in BUNA-N - #8700.28.)

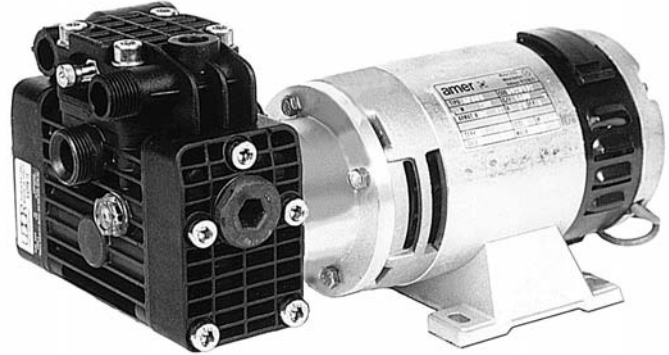


# KAPPA-7/15/18 12-Volt

## 12-Volt DC Powered Diaphragm Pump

KAPPA Series 12-Volt Diaphragm Pumps are excellent for various pest control, agricultural, lawn care & injection spraying applications.

For spraying applications not listed, please consult UDOR U.S.A.



KAPPA-7/15/18 12-V

### SPECIFICATIONS

Maximum Flow	
KAPPA-7/12-Volt .....	1.7 GPM
KAPPA-15/12-Volt .....	3.5 GPM
KAPPA-18/12-Volt .....	4.2 GPM
Maximum Pressure	
KAPPA-7/12-Volt .....	200 PSI
KAPPA-15/12-Volt .....	70 PSI
KAPPA-18/12-Volt .....	70 PSI
Hose Barb Ports	
Inlet .....	3/4" Hose Barb
Outlet .....	1/2" Hose Barb
Dimensions .....	L-14" x W-7" x H-7"
Weight .....	22 lbs.
Liquid Handling Parts ...	Anodized Aluminum, Glass-filled Nylon & Stainless Steel.
Diaphragm Material	
Standard .....	DESMOPAN
Optional .....	BUNA-N

NOTE - Protect pumps from freezing. If freezing conditions exist, flush pump and system with a 50/50 mixture of antifreeze and water.