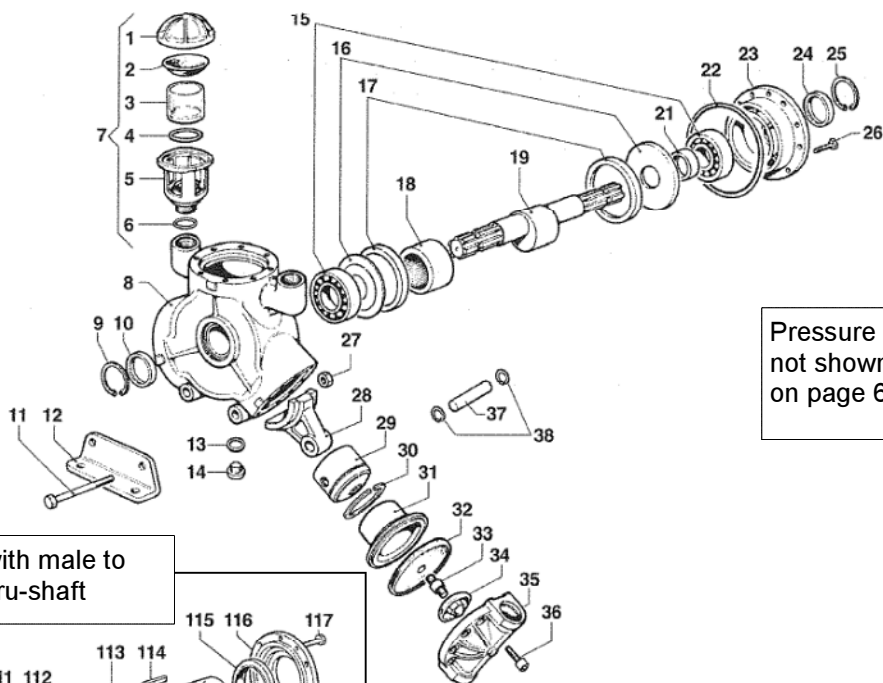




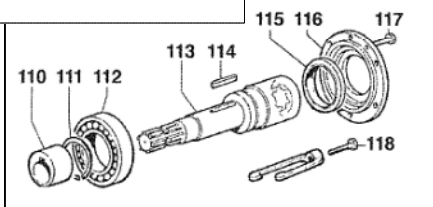
# IDS1000

IDS1000

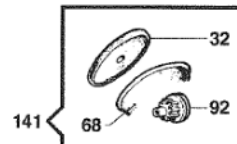
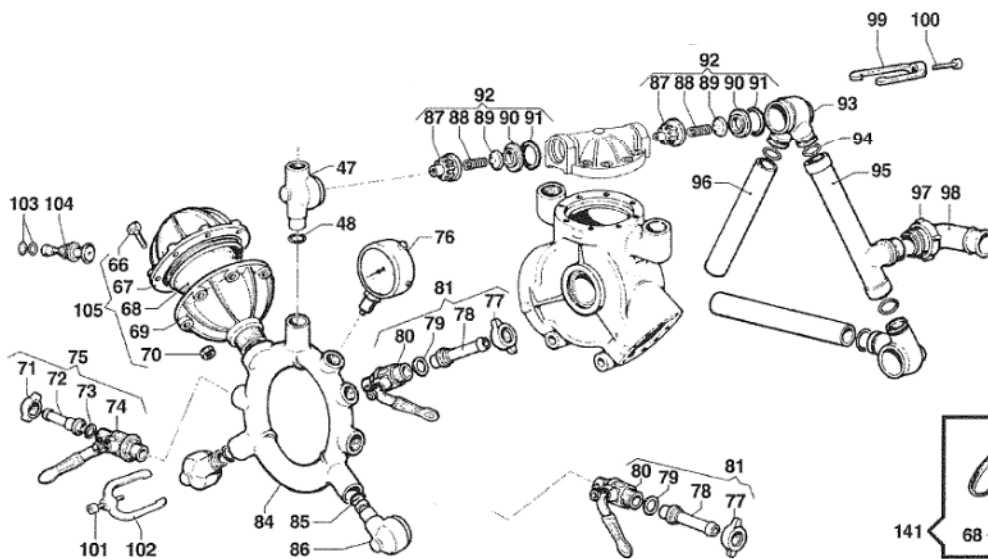
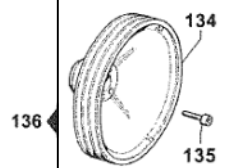


Pressure regulator included, but not shown. Refer to VRS series on page 61.

Version with male to female thru-shaft



Optional pulley kit



PRICES SUBJECT TO CHANGE WITHOUT NOTICE.

#	PART #	DESCRIPTION	NOTE	QTY
1	0402.0001.00	CAP		2
2	1800.0001.00	VOLUM. COMP. DIAPHRAGM		2
3	1809.0001.00	HOLDER		2
4	1210.0030.00	O-RING	3,53x39,69	2
5	0421.0004.00	OIL CUP		2
6	1210.0002.00	O-RING	2,62x20,7	2
7	1208.0002.00	OIL CUP ASSEMBLY		2
8	0403.0136.00	PUMP CRANKCASE		1
9	3020.0009.00	RETAINING CLIP	47	1
10	0019.0083.00	OIL SEAL	35x47x7	1
11	3607.0144.00	HEXAGONAL SCREW	M10x130	2
12	2400.0010.00	PUMP MOUNTING BRACKET		2
13	1210.0209.00	O-RING	2,0x19	1
14	3200.0001.00	PLUG	22MB	1
15	0438.0012.00	BALL BEARING	35x80x21	2
16	2813.0005.00	CONNECTING ROD WASHER	35,5x108x4	2
17	0010.0003.00	CONNECTING ROD RING	109,5x93x10	2
18	0437.0004.00	ROLLER BEARING	60x78x40	1
19	0001.0468.0	THROUGHSHAFT	1"3/8 M-M	1
21	0601.0046.00	SPACER	35,5x48	1
22	1210.0389.00	O-RING	1,78x107,67	1
23	0405.0020.00	SUPPORT COVER		1
24	0019.0083.00	OIL SEAL	35x47x7	1
25	3020.0009.00	RETAINING CLIP	47	1
26	3607.0225.00	HEXAGONAL SCREW	M10x20	6
27	0604.0038.00	NUT	M10	2
28	0205.0022.00	CONNECTING ROD ASSEMBLY		1
29	2409.0068.00	PISTON	70	3
30	0020.0001.00	COMPRESSION RING	70x3x2,8	3
31	0400.0016.00	PISTON SLEEVE	70	3
32	1800.0012.00	DIAPHRAGM	BUNA	3
	1800.0098.00	DIAPHRAGM	DESMOPAN	3
	1800.0031.00	DIAPHRAGM	VITON	3
33	2419.0042.00	STUD BOLT	12x30/11x11	3
34	0602.0011.00	DISC		3
35	3218.0009.00	PUMP MANIFOLD		3
36	3609.0091.00	SCREW	M12x35	24
37	3011.0003.00	CONNECTING ROD PIN	18x57	3
38	3020.0006.00	RETAINING CLIP	18	6
47	2806.0017.00	DELIV. HOSE TAIL FOR VALVE		1
48	1210.0003.00	O-RING	3,0x16,2	1
66	3607.0070.00	HEXAGONAL SCREW	M8x30	8
67	0003.0018.00	PRESSURE ACCUMULATOR		1
68	1800.0034.00	DIAPHRAGM		1
69	0002.0008.00	PRESSURE ACCUMULATOR		1
70	0604.0107.00	NUT	M8	8
71	1200.0038.00	WING NUT	1/2" GAS	1
72	2802.0018.00	DELIVERY HOSE TAIL	8x10	1

#	PART #	DESCRIPTION	NOTE	QTY
73	1209.0013.00	GASKET	12x18x2	1
74	2826.0031.00	LEFT TAP	1/2-1/2 GAS	1
75	1214.0016.00	COMPLETE LEFT TAP		1
76	1816.0118.00	PRESSURE GAUGE		1
77	1200.0038.00	WING NUT	1/2" GAS	2
78	2802.0018.00	DELIVERY HOSE TAIL	8x10	1
79	1209.0013.00	GASKET	12x18x2	2
80	2826.0032.00	RIGHT TAP	1/2-1/2 GAS	2
81	1214.0017.00	COMPLETE RIGHT TAP		2
82	1211.0012.00	ELBOW		1
83	1219.0041.00	SAFETY VALVE ASSEMBLY		1
84	0415.0008.00	DELIVERY MANIFOLD		1
85	1210.0003.00	O-RING	3,0x16,2	2
86	2806.0013.00	DELIVERY HOSE TAIL		2
87	1205.0005.00	SUCT./DELIVERY VALVE CAGE		6
88	1802.0015.00	SPRING (WIRE 8)	e11x17	6
89	3604.0009.00	SUCTION/DELIVERY VALVE		6
90	3009.0123.00	SUCT./DELIVERY VALVE SEAT		6
91	1209.0043.00	GASKET	29x42x1,8	6
92	1220.0010.00	SUCT./DEL. VALVE ASSY KIT		6
93	2804.0005.00	ELBOW SUCTION COUPLING		3
94	1210.0020.00	O-RING	3,53x20,22	6
95	3212.0004.00	"T" SUCTION HOSE		1
96	3213.0001.00	SUCTION HOSE		2
97	1200.0004.00	WING NUT	M46x2-35	1
98	2801.0001.00	SUCTION ELBOW TAIL	27x35	1
99	0418.0004.00	U-BOLT		3
100	3609.0160.00	SCREW	M10x30	3
101	3609.0160.00	SCREW	M10x30	3
102	0418.0004.00	U-BOLT		3
103	1209.0033.00	GASKET	14x7,5x2	2
104	3610.0003.00	AIR VALVE		1
105	0102.0020.00	PRESSURE ACCUMULATOR KIT		1

#	PART #	DESCRIPTION	NOTE	QTY
110	0800.0004.00	ECCENTRIC		1
111	3019.0005.00	EXTERNAL SEEGER		1
112	0438.0013.00	BALL BEARING	65x120x23	1
113	0004.0023.00	SHAFT	1"3/8-6F	1
114	1602.0020.00	KEY	10x8x40	1
115	0019.0001.00	OIL SEAL	68x90x10	1
116	1004.0002.00	FLANGE		1
117	3621.0004.00	SPECIAL SCREW	M8x14	2
118	3607.0220.00	EXAGONAL SCREW	M10x30	3

#	PART #	DESCRIPTION	NOTE	QTY
136	5001.0028.00	14" PULLEY KIT		1

#	PART #	DESCRIPTION	NOTE	QTY
101	5026.0092.00	ORDINARY MAINTENANCE KIT		1