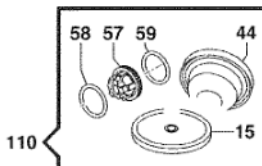
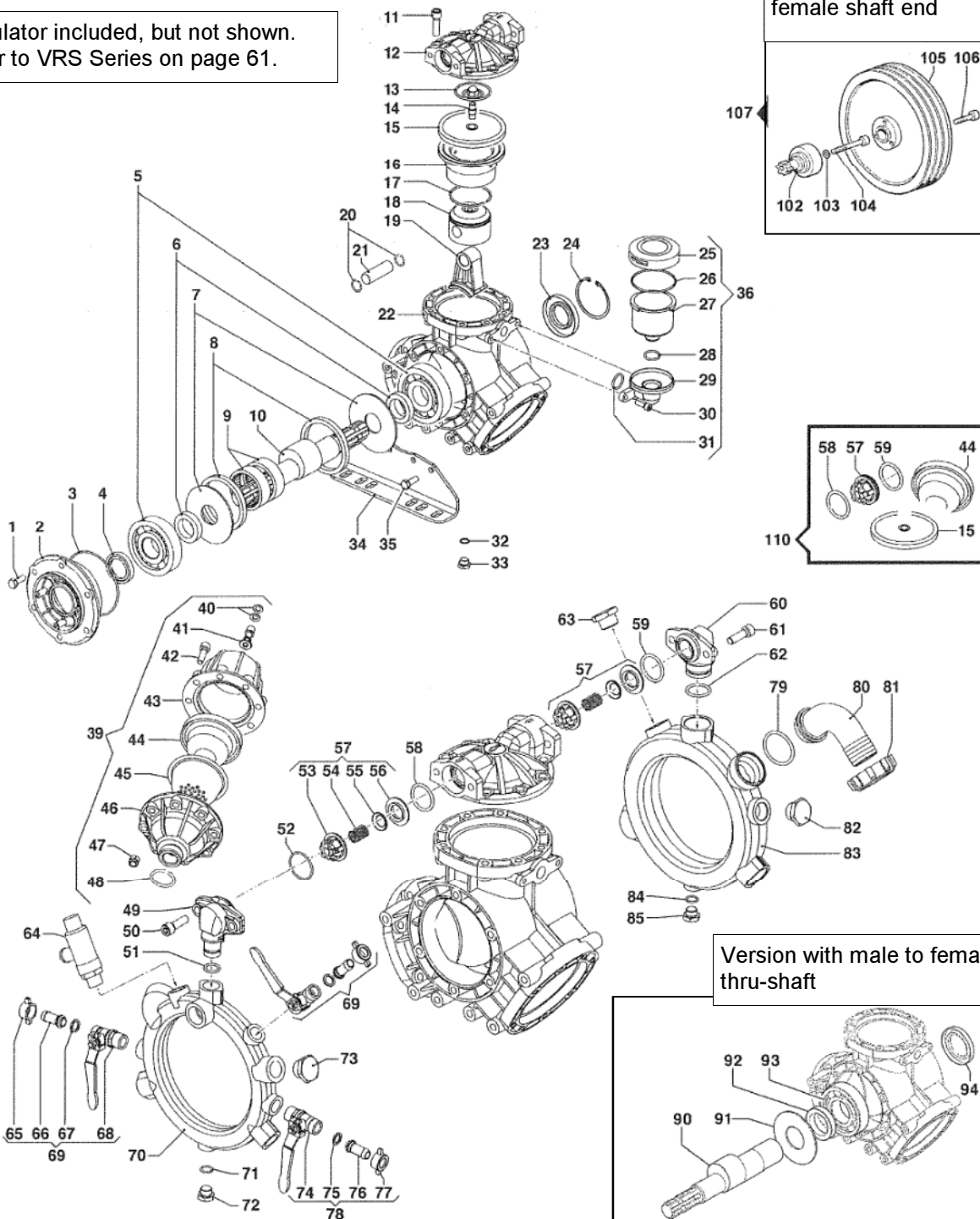
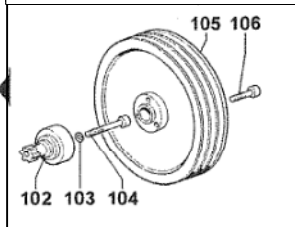




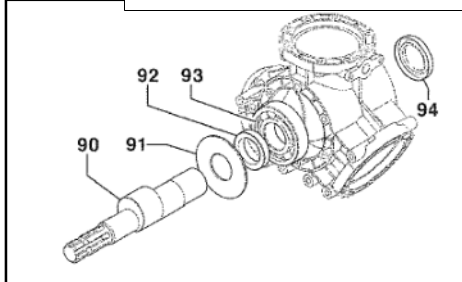
# IDS1401

Regulator included, but not shown.  
Refer to VRS Series on page 61.

Optional pulley kit fits  
female shaft end



Version with male to female  
thru-shaft



IDS1401

PRICES SUBJECT TO CHANGE WITHOUT NOTICE.

#	PART #	DESCRIPTION	NOTE	QTY
1	3607.0220.00	HEXAGONAL SCREW	M10x30	6
2	0405.0069.00	SUPPORT COVER		1
3	1210.0558.00	O-RING	2,62x126,6	1
4	0019.0068.00	OIL SEAL	40x60x10	1
5	0438.0088.00	BALL BEARING	40x110x27	2
6	0601.0264.00	SPACER	40,5x57x14	2
7	2813.0030.00	CONNECTING ROD WASHER	4x115x3,5	2
8	0010.0003.00	CONNECTING ROD RING	109,5x93x10	2
9	0437.0078.00	ROLLER BEARING	63x80x25	2
10	0001.0488.00	ECCENTRIC SHAFT	1"3/8 M-M	1
11	3609.0189.00	SCREW	M12x40	24
12	3218.0340.00	PUMP MANIFOLD		3
13	0602.0056.00	DISC		3
14	2419.0042.00	STUD BOLT	12MBx30	3
15	1800.0012.00	PUMP DIAPHRAGM	BUNA	3
	1800.0098.00	PUMP DIAPHRAGM	DESMOPAN	3
	1800.0031.00	PUMP DIAPHRAGM	VITON	3
16	0400.0083.00	IDS1401 PISTON SLEEVE	78	3
	0400.0082.00	IDS1201 PISTON SLEEVE	73	3
17	0020.0012.00	IDS1401 COMPRESSION RING	78	3
	0020.0013.00	IDS1201 COMPRESSION RING	73	3
18	2409.0110.00	IDS1401 PISTON	78	3
	2409.0106.00	IDS1201 PISTON	73	3
19	0205.0072.00	CON-ROD ASSEMBLY		1
20	3020.0022.00	RETAINING CLIP	22	6
21	3011.0025.00	IDS1401 CONNECTING ROD PIN		3
	3011.0027.00	IDS1201 CONNECTING ROD PIN		3
22	0403.0157.00	PUMP CRANKCASE		1
23	0019.0087.00	OIL SEAL	40x80x10	1
24	3020.0032.00	RETAINING CLIP	80	1
25	0402.0143.00	CAP		1
26	1210.0373.00	O-RING	3,53x73,03	1
27	0421.0012.00	OIL CUP		1
28	1210.0002.00	O-RING	2,62x20,7	1
29	3002.0566.00	SUPPORT		1
30	3609.0002.00	SCREW	M8x25	2
31	1210.0110.00	O-RING	3,53x24,99	1
32	1210.0441.00	O-RING	2x14	1
33	3200.0007.00	PLUG	3/8 GAS	1
34	2400.0095.00	PUMP MOUNTING BRACKET		2
35	3607.0220.00	HEXAGONAL SCREW	M10x30	8
36	1208.0023.00	OIL CUP ASSEMBLY		1
39	1225.0026.00	PULSATION DAMPNER		1
40	1209.0033.00	GASKET	12x18x2	2
41	3610.0003.00	AIR VALVE		1
42	3609.0099.00	SCREW	M8x45	8
43	0003.0035.00	PRESSURE ACCUMULATOR		1
44	1800.0177.00	ACCUMULATOR DIAPHRAGM		1
45	0460.0037.00	DIAPHRAGM SUPPORT CAP		1
47	0604.0039.00	NUT	M8x9,5	8

#	PART #	DESCRIPTION	NOTE	QTY
48	1210.0033.00	O-RING	3,0x28	1
49	2806.0027.00	ELBOW		3
50	3609.0022.00	SCREW	M10x25	6
51	1210.0003.00	O-RING	3,0x16,2	3
52	1210.0090.00	O-RING	2x38	3
53	1205.0039.00	SUCT./DELIV. VALVE CAGE		6
54	1802.0248.00	REGULATION VALVE SPRING		6
55	3604.0031.00	SUCTION/DELIVERY VALVE		6
56	3009.0146.00	SUCT./DELIV. VALVE SEAT		6
57	1220.0066.00	SUCT./DELIVERY VALVE KIT		3
58	1210.0018.00	O-RING	3,53x34,52	3
59	1210.0011.00	O-RING	3,0x36	3
60	2806.0026.00	ELBOW		6
61	3609.0022.00	SCREW	M10x25	3
62	1210.0498.00	O-RING	3x30	1
63	3200.0064.00	PLUG	G3/4 M	1
64	1219.0041.00	SAFETY VALVE ASSEMBLY	50 BAR	2
65	1200.0038.00	WING NUT	1/2" GAS	2
66	2802.0018.00	DELIVERY HOSE TAIL	8x10	2
67	1209.0013.00	GASKET	12x18x2	2
68	2826.0031.00	LEFT TAP	1/2-1/2 GAS	2
69	1214.0019.00	COMPLETE LEFT TAP		1
70	0415.0058.00	DELIVERY MANIFOLD		1
71	1210.0441.00	O-RING	2x14	1
72	3200.0007.00	PLUG	3/8 GAS	1
73	3200.0064.00	PLUG	G3/4 M	1
74	2826.0032.00	RIGHT TAP	1/2-1/2 GAS	1
75	1209.0013.00	GASKET	12x18x2	1
76	2802.0018.00	DELIVERY HOSE TAIL	8x10	1
77	1200.0038.00	WING NUT	1/2" GAS	1
78	1214.0018.00	COMPLETE RIGHT TAP		1
79	1210.0200.00	O-RING	2,62x42,52	1
80	2801.0085.00	SUCTION ELBOW TAIL	33x40	1
81	1200.0060.00	WING NUT	G 1"3/4	1
82	3200.0115.00	PLUG	G3/4 M	1
83	0415.0060.00	SUCTION MANIFOLD		1
84	1210.0441.00	O-RING	2x14	1
85	3200.0007.00	PLUG	3/8 GAS	1

#	PART #	DESCRIPTION	NOTE	QTY
90	0001.0489.00	MALE TO FEMALE SHAFT		1
92	2813.0078.00	CONNECTING ROD WASHER	50x115x3,5	1
92	0601.0300.00	SPACER	50,3x70x14	1
93	0438.0033.00	BALL BEARING	50x110x27	1
94	0019.0117.00	OIL SEAL	50x80x10	1

#	PART #	DESCRIPTION	NOTE	QTY
107	5001.0071.00	PULLEY KIT	3A-p350	1

#	PART #	DESCRIPTION	NOTE	QTY
110	5026.0278.00	REBUILD KIT		1