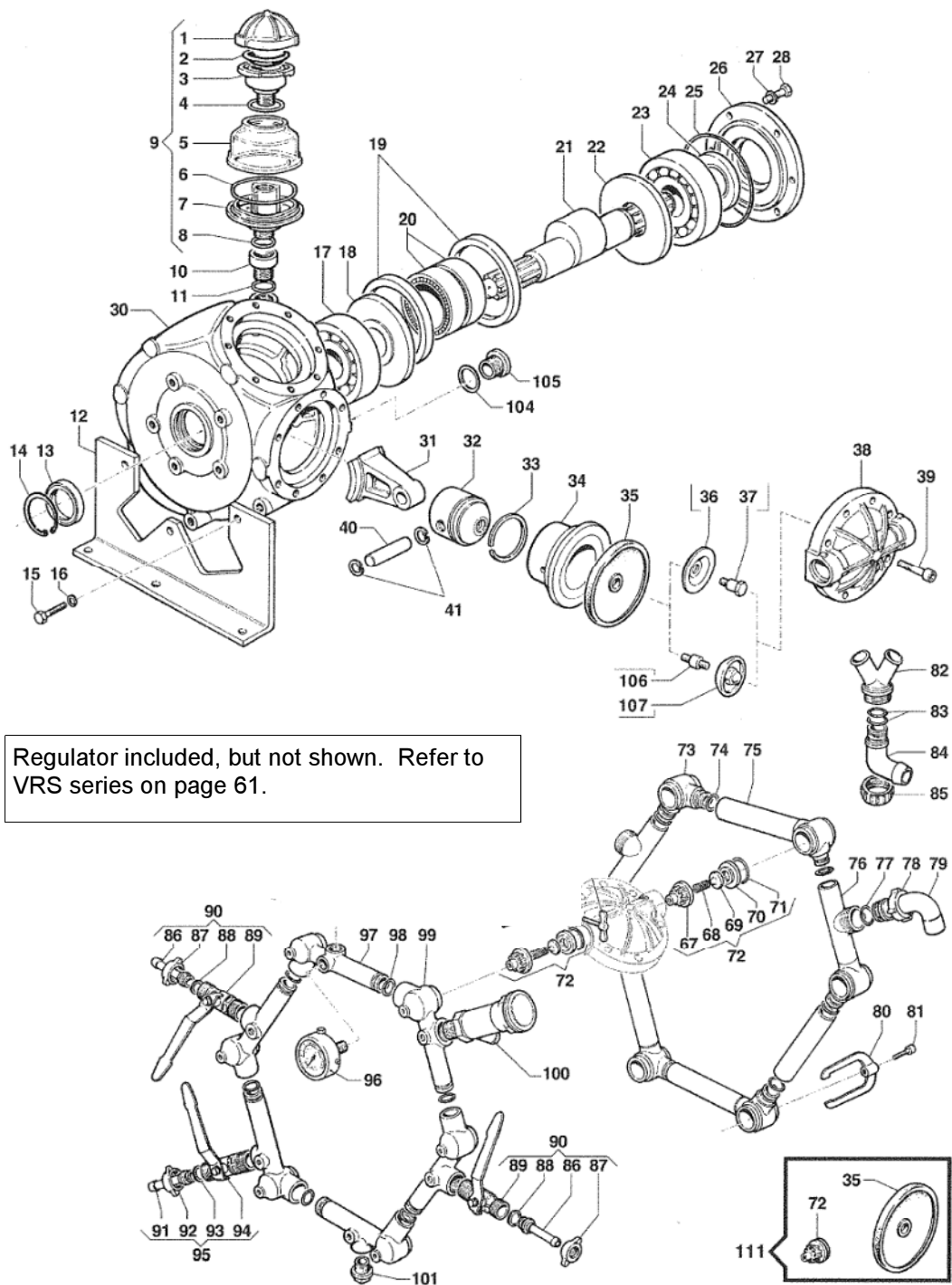




IDS2200 / IDS2600

IDS2200 / IDS2600



Regulator included, but not shown. Refer to VRS series on page 61.

PRICES SUBJECT TO CHANGE WITHOUT NOTICE.

#	PART #	DESCRIPTION	NOTE	QTY
1	0402.0001.00	CAP		1
2	1800.0001.00	VOLUM. COMP. DIAPHRAGM		1
3	0421.0001.00	OIL CUP		1
4	1210.0067.00	O-RING	2,62x55,25	1
5	1809.0006.00	HOLDER		1
6	1210.0213.00	O-RING	3,53x82,14	1
7	0402.0288.00	COVER		1
8	1210.0002.00	O-RING	2,62x20,7	1
9	1208.0019.00	OIL CUP ASSEMBLY		1
10	2825.0009.00	M/F REDUCTION	28MC-28MC	1
11	1210.0002.00	O-RING	2,62x20,7	1
12	2400.0050.00	PUMP MOUNTING BRACKET		2
13	0019.0025.00	OIL SEAL	45x60x7	1
14	3020.0011.00	RETAINING CLIP	60	1
15	3607.0220.00	HEXAGONAL SCREW	M10x30	6
16	2819.0001.00	SPRING WASHER	10,5x17,x2,2	6
17	0440.0026.00	SWINGING BEARING	45x100x25	1
18	2813.0077.00	CONNECTING ROD WASHER	128x45x10,7	1
19	0010.0004.00	CONNECTING ROD RING	129x110x10	2
20	0437.0006.00	ROLLER BEARING	65x95x28	2
21	0001.0423.00	IDS2600 THROUGHSHAFT	1"3/8 M-M	1
	0001.0108.00	IDS2200 THROUGHSHAFT	1"3/8 M-M	1
22	2813.0076.00	CONNECTING ROD WASHER	128x50x11,2	1
23	0438.0008.00	BALL BEARING	50x130x31	1
24	0019.0028.00	OIL SEAL	50x65x8	1
25	1210.0092.00	O-RING	1,78x126,72	1
26	1004.0007.00	FLANGE		1
27	2811.0098.00	WASHER	10,5x18x2	6
28	3607.0226.00	HEXAGONAL SCREW	M10x25	6
30	0403.0143.00	PUMP CRANKCASE		1
31	0205.0066.00	IDS2600 CONN ROD SET		1
	0205.0010.00	IDS2200 CONN ROD SET		1
32	2409.0094.00	IDS2600 PISTON	80	6
	2409.0068.00	IDS2200 PISTON	70	6
33	0020.0003.00	IDS2600 COMPRESSION RING	80	6
	0020.0001.00	IDS2200 COMPRESSION RING	70	6
34	0400.0076.00	IDS2600 PISTON SLEEVE	80	6
	0400.0017.00	IDS2200 PISTON SLEEVE	70	6
35	1800.0012.00	DIAPHRAGM	BUNA	6
	1800.0098.00	DIAPHRAGM	DESMOPAN	6
	1800.0031.00	DIAPHRAGM	VITON	6
36	0602.0049.00	ONLY IDS2600 DISC		6
37	3605.0093.00	IDS2600 DIAPHRAGM BOLT	M12x1,5	6
38	3218.0128.00	IDS2600 PUMP MANIFOLD		6
	3218.0009.00	IDS2200 PUMP MANIFOLD		6
39	3609.0015.00	SCREW	M12x30	48
40	3011.0007.00	IDS2600 CONNECTING ROD PIN		6
	3011.0003.00	IDS2200 CONNECTING ROD PIN		6
41	3020.0022.00	IDS2600 RETAINING CLIP	22	12
	3020.0006.00	IDS2200 RETAINING CLIP	22	12

#	PART #	DESCRIPTION	NOTE	QTY
67	1205.0005.00	SUCT./DELIV. VALVE CAGE		12
68	1802.0015.00	SPRING (WIRE 8)	e11x17	12
69	3604.0009.00	SUCTION/DELIVERY VALVE		12
70	3009.0123.00	SUCT./DELIVERY VALVE SEAT		12
71	1209.0043.00	GASKET	29x42x1,8	12
72	1220.0010.00	SUCT./DEL. VALVE ASSY KIT		12
73	2804.0008.00	ELBOW SUCTION COUPLING		6
74	1210.0096.00	O-RING	3,53x21,82	12
75	3213.0004.00	SUCTION HOSE		4
76	3212.0036.00	SUCTION HOSE FOR COUPLING		2
77	1209.0126.00	GASKET		2
78	1200.0058.00	WING NUT	M52/8	2
79	2801.0071.00	SUCTION ELBOW TAIL		2
80	0418.0004.00	U-BOLT		12
81	3609.0160.00	SCREW	M10x30	12
82	2803.0440.00	IDS2600 "Y" SUCTION	40-G2"1/2	1
	2803.0442.00	IDS2200 "Y" SUCTION	40-G2"	1
83	1210.0387.00	IDS2600 O-RING	3,53x55,56	2
	1210.0030.00	IDS2200 O-RING	3,53x39,69	2
84	2801.0070.00	IDS2600 SUCTION ELBOW TAIL	60	1
	2801.0035.00	IDS2200 SUCTION ELBOW TAIL	50	1
85	1200.0057.00	IDS2600 WING NUT	G2"1/2	1
	1200.0033.00	IDS2200 WING NUT	G2"1/2	1
86	2802.0020.00	DELIVERY HOSE TAIL	10x13	2
87	1200.0038.00	WING NUT	1/2" GAS	2
88	1209.0013.00	GASKET	12x18x2	2
89	2826.0031.00	LEFT TAP	1/2-1/2 GAS	2
90	1214.0016.00	COMPLETE LEFT TAP		2
91	2802.0020.00	DELIVERY HOSE TAIL	10x13	1
92	1200.0038.00	WING NUT	1/2" GAS	1
93	1209.0013.00	GASKET	12x18x2	1
94	2826.0032.00	RIGHT TAP	1/2-1/2 GAS	1
95	1214.0017.00	COMPLETE RIGHT TAP		1
96	1816.0122.00	PRESSURE GAUGE	50 BAR-1/4"	1
97	3214.0037.00	FITTING		1
98	1210.0020.00	O-RING	3,53x20,22	6
99	3214.0020.00	DELIVERY HOSE FOR TAP		5
100	1219.0041.00	SAFETY VALVE ASSEMBLY	50 BAR	1
101	3200.0011.00	PLUG		1
104	1210.0209.00	O-RING	2,0x19	1
105	3200.0001.00	PLUG	22MB	1
106	0602.0011.00	ONLY IDS2200 DISC		6
107	2419.0042.00	IDS2200 DIAPHRAGM BOLT	12MBx30	6

#	PART #	DESCRIPTION	NOTE	QTY
130	5026.0097.00	REBUILD KIT		1